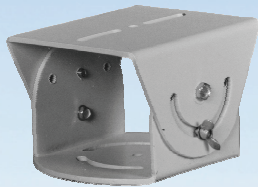


V1570 Series Housing Mounts

Infinova[®]
The Integrator's Manufacturer



V1571-W



V1573



V1573-2

- **For indoor/outdoor installations**
- **Die-cast aluminum**
- **Easy installation and maintenance**

V1571-W is specially designed for use with Infinova's V1405 housing. It features manual adjustments, 360° in horizontal direction and adjustments in vertical direction.

V1573 and V1573-2 are specially designed to provide 360° horizontal adjustment and 180° vertical adjustment.

Technical specifications

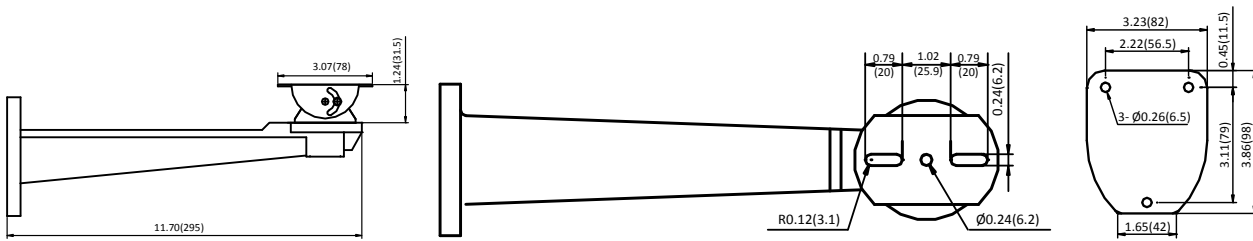
Housing Installation	V1571-W: Mounted with two M6x16 hexagon bolts; V1573: Mounted with two M6x16 hexagon bolts V1573-2: Mounted with two M6x10 hexagon bolts
Weight	V1571-W: 1.43 lbs. (0.65 kg); V1573: 2.43 lbs. (1.1 kg) V1573-2: 2.43 lbs. (1.1 kg)
Loading	V1571-W: 33.07 lbs. (15 kg); V1573: 44.09 lbs. (20 kg) V1573-2: 44.09 lbs. (20 kg)
Box Dimensions (LxWxH)	V1571-W: 12.20"x4.33"x3.35" (310mmx110mmx85mm); V1573: 5.31"x4.72"x3.94" (135mmx120mmx100mm)

Ordering information

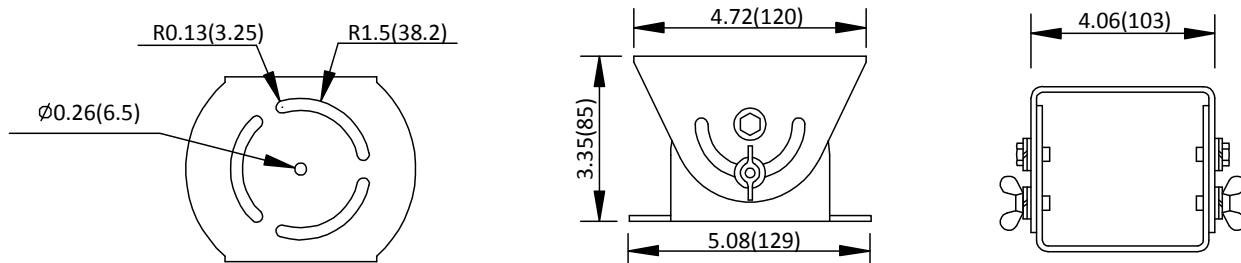
V1571-W	Wall Mount, H/V adjustable for housing (V1405), 33.07 lbs. (15 kg) load
V1573	Mount Adapter, Adds H/V adjustability to Wall Mount for housing (V1405, V1406, V1407), 44.09 lbs (20 kg) load
V1573-2	Mount Adapter, Adds H/V adjustability to Wall Mount for housing (V1405, V1406, V1407), 44.09 lbs (20 kg) load

Dimensions

V1571-W



V1573



V1573-2



(Unit: inch, in the parentheses is mm)